

**SWAN LAKE FIRST NATION – MATRIX SOLUTIONS
INC. PARTNERSHIP**

INDIGENOUS CONSTRUCTION MONITORING

WEEKLY REPORT

SPREAD 9

OCTOBER 15TH TO OCTOBER 20TH

1. PURPOSE OF THIS REPORT

The report is a weekly summary of the daily reports submitted by the Indigenous Construction Monitors that are working on spread nine. The social and cultural findings have been tabulated with locations and mitigation measures below. A summary of the construction activities has been summarized for the weeks of October 15th to October 20th, 2018.

Social and Cultural Features

Field Observation	# of occurrences	Description and Mitigation Measures	Mitigation Status	Further Action Required (Yes/No)
Traditional Use Area (hunting, fishing, gathering, trapping)	N/A			
Rock Formations (rocks of significance, tipi rings, etc.)	N/A			
Artifacts	N/A			
Bones	N/A			
Potential Gravesites	N/A			

Environmental Features

Field Observation	# of occurrences	Description and Mitigation Measures	Mitigation Status	Further Action Required (Yes/No)
Medicinal or Cultural Plants	N/A			
Aquatic Life	N/A			
Animal Observations or Burrows	N/A			
Bird Nests	N/A			
Trees (Red Willow)	N/A			
Wetlands	N/A			
Watercourse Crossing	N/A			

Additional Observations and Summary of Activities or Concerns

Weekly activity included attending daily tailgate meetings and continue to check access points on the ROW and monitor activities on Spread 9.

October 15, 2018 - Safety included: Slips, trips, falls: watch your footing. Dangers today wet conditions and ice. Watch for wild-life: scan the ditches practice defensive driving. Proper disposal of cigarettes butts. Tie boots watch step tree point contact. Be wary of equipment in high congestion area. Slow down meeting traffic. Drive to condition of road.

Weather forecast/Environment: Temperature -2.

Help to keep clean R.O.W. clean of garbage and recycling. Keep land owner wishes honoured. Use access roads, stay off farmer's fields. While driving R.O.W. try not to create deep ruts for land owners.

General: Safety meeting this morning Conducted by senior monitor.

Areas suggested to be monitored; Monitored SSKP 1078.78-(MB-WC1013) Boring equipment ready to commence at this KP. ROW was frozen enough to journey across.

On to SSKP 1071.782-(MB-WC76) monitored area. Here Rigging is continuing at Rosenheim Drain AKA Grass Dancing Creek. Noted that there was a lot of congestion in area. Made room for machines to manoeuvre and senior monitor was monitoring area. Made way to SSKP 1026.00 and SSKP 1027.00. noted that here there is no activities all along the escarpment. On to SSKP 1035.07-(MBR-WC3) As crews ready ROW for restoration here at Thornhill Coulee. Dead Horse Creek on both sides of the creek, once again, is quiet. SSKP 10411.03 and 1041.44 (HER-175) SSKP 1041.44. Made way back to Morden field office to complete report.

Work Forecast: Monitor spread #9 and possibly go to sskp 1071-1073.600-Her-176

October 16, 2018 - Safety included: Slips, trips, falls: watch your footing. Dangers today wet conditions. Wild-life: scan the ditches practice defensive driving. Tie boots watch step tree point contact. Be wary of equipment in high congestion area. Slow down meeting traffic. Drive to condition of road.

Help to keep clean R.O.W. clean of garbage and recycling. Proper disposal of cigarettes butts. Keep land owner wishes honoured. Use access roads, stay off farmer's fields.

While driving R.O.W. try not to create deep ruts for land owners.

Weather forecast/Environment: -2 degrees.

General: Safety meeting this morning Conducted by senior monitor.

SSKP 1078.78-(MB-WC1013) Boring equipment ready to commence at this KP. ROW was dry enough to cross. SSKP 1071.782-(MB-WC76) monitored area. Here Rigging is continuing at Rosenheim Drain AKA Grass Dancing Creek. Noted that there was alot of congestion in area. Pump H2O from bell holes ahead of tie in ditch. Clean up from hoarding. Monitored the area for most of the morning. Made way to SSKP 1026.00 and SSKP 1027.00. noted that here there still is no activities all along the escarpment.

On to SSKP 1035.07-(MBR-WC3) As crews ready ROW for restoration here at Thornhill Coulee. Dead Horse Creek On both sides of the creek, SSKP 1041.03 alot of activity with the installation tie ins from SSKP 1040 heading east ward. 1041.44 (HER-175) Over here on this side the mat crew was stacking the mats tidying up this area.

Made way back to Morden field office to complete report.

Work Forecast: Monitor spread 9 and possibly go to sskp DEAD HORSE CREEK

October 17, 2018 - Safety included: Slips, trips, falls: watch your footing. Dangers today wet conditions and ice. Watch for wild-life: scan the ditches practice defensive driving.

Tie boots watch step tree point contact. Be wary of equipment in high congestion area.

Slow down meeting traffic. Drive to condition of road.

Weather forecast/Environment: 2 degrees

Help to keep clean R.O.W. clean of garbage and recycling. Proper disposal of cigarettes butts. Keep land owner wishes honoured. Use access roads, stay off farmer's fields.

While driving R.O.W. try not to create deep ruts for land owners.

General: Safety meeting this morning Conducted by senior monitor.

Areas suggested to be monitored; Monitored SSKP 1078.78-(MB-WC1013) mainline coating ready to commence at this KP. Coat tie-in welds. section welds, Hot bend welds. ROW was frozen enough to journey across in the early morning frost. On to SSKP 1071.782-(MB-WC76) monitored area. Here crew is continuing main line ditch heading east ward. Rigging is continuing at Rosenheim Drain AKA Grass Dancing Creek. Noted that there was allot of congestion in area. Made way to SSKP 1026.00 and SSKP 1027.00. noted that here there is no activities all along the escarpment.

On to SSKP 1035.07-(MBR-WC3) As crews ready ROW for restoration here at Thornhill Coulee. back filled. Dead Horse Creek On both sides of the creek, once again, is quiet. SSKP 1041.03 and 1041.44 (HER-175). Made way back to Morden field office to complete report.

Work Forecast: Continue to monitor Spread #9

October 18, 2018 - Safety included: Slips, trips, falls: watch your footing. Dangers today wet conditions and ice. Watch for wild-life: scan the ditches practice defensive driving.

Tie boots watch step tree point contact. Be wary of equipment in high congestion area.

Slow down meeting traffic. Drive to condition of road.

Weather forecast/Environment: 3 degrees

Help to keep clean R.O.W. clean of garbage and recycling. Proper disposal of cigarettes butts. Keep land owner wishes honoured. Use access roads, stay off farmer's fields.

While driving R.O.W. try not to create deep ruts for land owners.

General:

Safety meeting this morning Conducted by senior monitor.

Areas suggested to be monitored; Monitored SSKP 1078.78-(MB-WC1013) Testco hydro test and dewatering Buffalo Creek. On to SSKP 1071.782-(MB-WC76) monitored area. Here at Rosenheim Drain AKA Grass Dancing Creek exposing clipper line for cathodic protection. Straw boss's name is Derick.

Made way to SSKP 1026.00 and SSKP 1027.00. noted that here there is no activities all along the escarpment. Dead Horse Creek on both sides of the creek, once again, is quiet. SSKP 1041.03 and 1041.44 (HER-175) crew is packing mats.

Made way back to Morden field office to complete report.

Work Forecast: Continue to monitor spread 9.

October 19, 2018 - Safety included: Slips, trips, falls: watch your footing. Dangers today wet conditions and ice. Watch for wild-life: scan the ditches practice defensive driving. Tie boots watch step tree point contact. Be wary of equipment in high congestion area. Slow down meeting traffic. Drive to condition of road.

Weather forecast/Environment: 12 degrees

Help to keep clean R.O.W. clean of garbage and recycling. Proper disposal of cigarettes butts. Keep land owner wishes honoured. Use access roads, stay off farmer's fields.

While driving R.O.W. try not to create deep ruts for land owners.

General: Safety meeting this morning Conducted by senior monitor.

Areas suggested to be monitored; Monitored SSKP 1078.78-(MB-WC1013) lowering pipe. Continuing to bore at this KP. On to SSKP 1071.782-(MB-WC76) monitored area. Here crew is continuing main line ditch heading east ward. Boring is continuing at Rosenheim Drain. Noted that there was a lot of congestion in area. Made way to SSKP 1026.00 and SSKP 1027.00 noted that here there is no activities all along the escarpment. Dead Horse Creek. SSKP 1041.03 welding lowering. 1041.44 (HER-175) lowering pipe. Monitored SSKP 1091.78 Installing pipe rail shoring at road 57

Made way back to Morden field office to complete report.

Work Forecast: Continue to monitor Spread 9 and possibly go to sskp 1035.

October 20, 2018 - Safety included: Slips, trips, falls: watch your footing. Dangers today wet conditions and ice. Watch for wild-life: scan the ditches practice defensive driving. Tie boots watch step tree point contact. Be wary of equipment in high congestion area. Slow down meeting traffic. Drive to condition of road.

Weather forecast/Environment: 2 degrees

Help to keep clean R.O.W. clean of garbage and recycling. Proper disposal of cigarettes butts. Keep land owner wishes honoured. Use access roads, stay off farmer's fields.

While driving R.O.W. try not to create deep ruts for land owners.

General:

Safety meeting this morning Conducted by senior monitor.

Areas suggested to be monitored; On to SSKP 1071.782-(MB-WC176) monitored area. Setup for pullback for Monday at Rosenheim Drain AKA Grass Dancing Creek

Made way to SSKP 1026.00 and SSKP 1027.00. noted that here there is no activities all along the escarpment. On to SSKP 1035.07-(MBR-WC3) Thornhill Coulee. back filled.

Dead Horse Creek West side tie ins. East side crews restoring, back filling. SSKP 1041.03 and 1041.44 (HER-175) SSKP 1025 Preparing ROW for restoration

SSKP 1020 Clean up in this area removal of portable toilets. Today was given direction by our senior monitor to travel DEAD HORSE CREEK kp 1043.03 and monitor as they were cleaning up and hauling the pads out. I had checked out the geotec it was in good shape as they removed the mats and did a sweep of the area. Had travelled to kp 1025.28 to monitor the clean-up crew and was in good shape well done as I did a sweep up to kp1026+000 all good shape and clean. Travel to kp 1020.81 as they were doing the final clean-up it was in good shape as well. Travelled from there to kp 1071.49-1071.71 (HER-176) and monitored the HDD for the afternoon and came back after to do our reports.

Work Forecast: day off

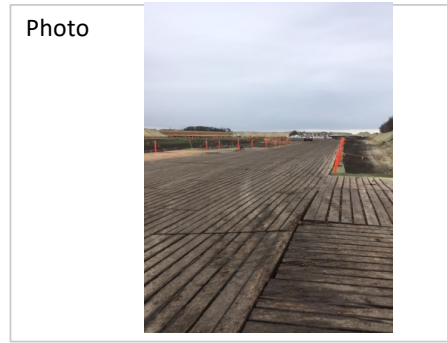
Photos of Sites Visited & Topics Discussed This Week

October 15, 2018



Description & Location:

kp 1027+000 picture was taken face south



Description & Location:

Dead horse creek 1041.790-mb-we-1002 picture was taken facing south as we did the clean up sweep



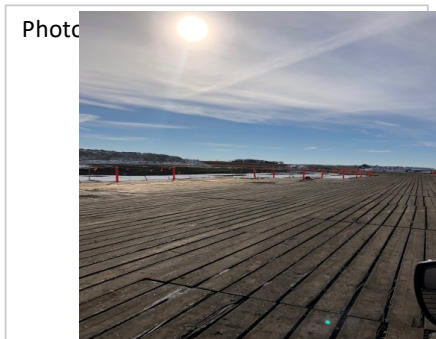
Description & Location:

Escarpment SSKP 1027 facing south



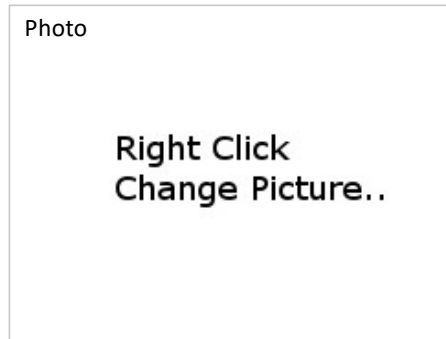
Description & Location:

Escarpment SSKP 1027 south



Description & Location:

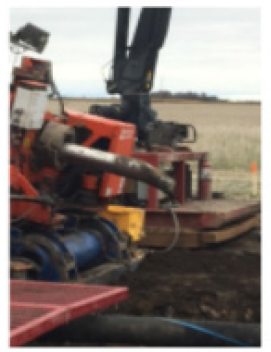
Dead horse creek SSKP 1041.44 facing north



Description & Location:

October 16, 2018

Photo



Description & Location:

GRASS DANCERS1071+700 DITCH
WITCH DRILL THE PICTURE WAS TAKEN
FACING NORTH EAST

Photo

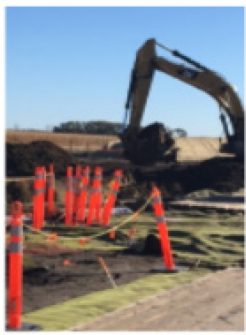


Description & Location:

DEAD HORSE CREEK 1041.03-1041.44
(HER-175 AS THE PICTURE WAS TAKEN
FACING SOUTH EAST

October 17, 2018

Photo



Description & Location:

DEAD HORSE CREEK 1041.03-1041.44
(HER-175) PICTURE WAS TAKEN FACING
SOUTH EAST

Photo



Description & Location:

STARTED AT KP 1071.49-1071.71(HER-176
PICTURE WAS TAKEN FACING NORTH EAST

Photo



Description & Location:

travel to monitor the crew on
the line kp1087+000

Photo



Description & Location:

end off on kp1084+500

Photo



Description & Location:

rd. 51 looking north

Photo



Description & Location:

photo of Dead horse Creek looking south

October 18, 2018

Photo



Description & Location:

kp 1071+700 vac truck
picture was taken facing west

Photo



Description & Location:

kp 1071+700 picture was taken facing
north

Photo



Description & Location:

travel to monitor the crew on
the line kp1087+000

Photo



Description & Location:

end off on kp1084+500

Photo



Description & Location:

KP 1071 hydro vac crew facing west

Photo

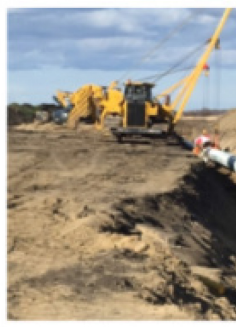


Description & Location:

SSKP 1078.78 looking east

October 19, 2018

Photo



Description & Location:

DEAD HORSE CREEK TIE IN
KP 1041+400
PICTURE WAS TAKING
FACING NORTH

Photo



Description & Location:

KP 1041+400 PICTURE WAS TAKING
FACING
WEST

Photo



Description & Location:

SSKP 1078 looking east

Photo



Description & Location:

SSKP 1078 looking North

Photo



Description & Location:

Gretna Mb End of the line looking south

Photo



Description & Location:

Photo of SSKP 1091 Looking north

October 20, 2018

Photo



Description & Location:

kp 1026+000 picture was taken facing south

Photo



Description & Location:

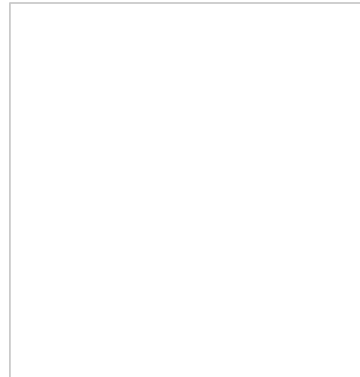
kp 1026+000 dozer leveling off the clay picture was taken facing north west

Photo



Description & Location:

SSKP 1041 looking east



Description & Location:



Photo



Description & Location:

SSKP 1035 looking south

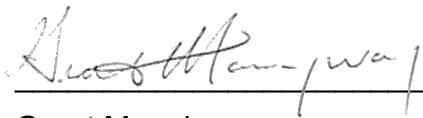
Photo



Description & Location:

photo of Dead horse Creek looking south

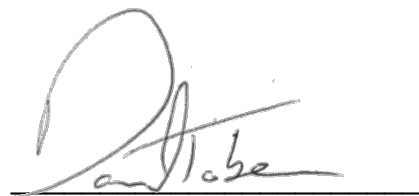
APPROVALS



Grant Manningway
Construction Monitor

January 14, 2019

Date



Daniel Tober
Senior Environmental Scientist

January 14, 2019

Date